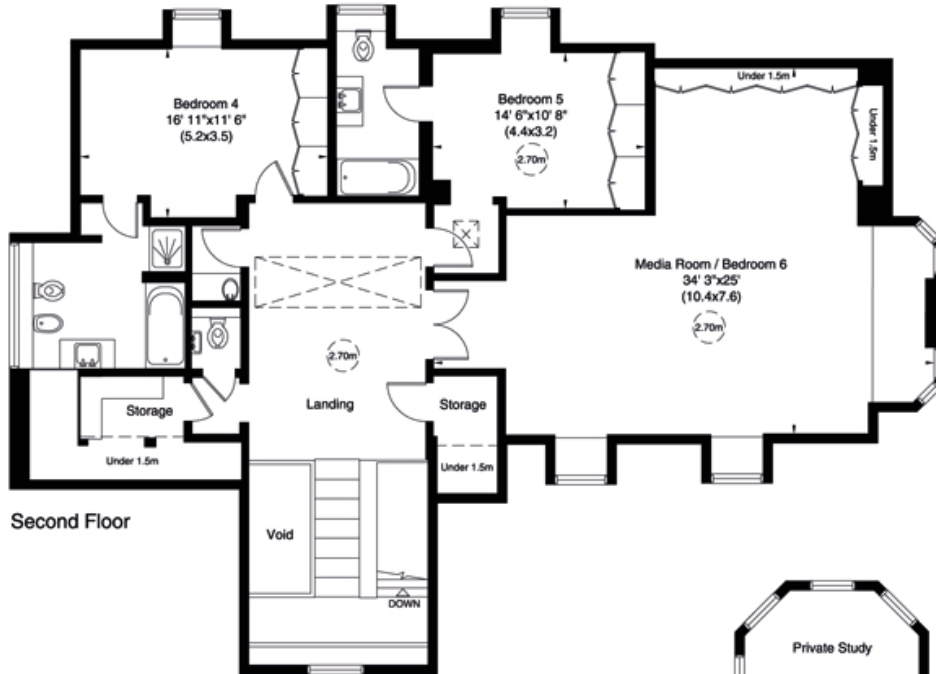


Ground Floor



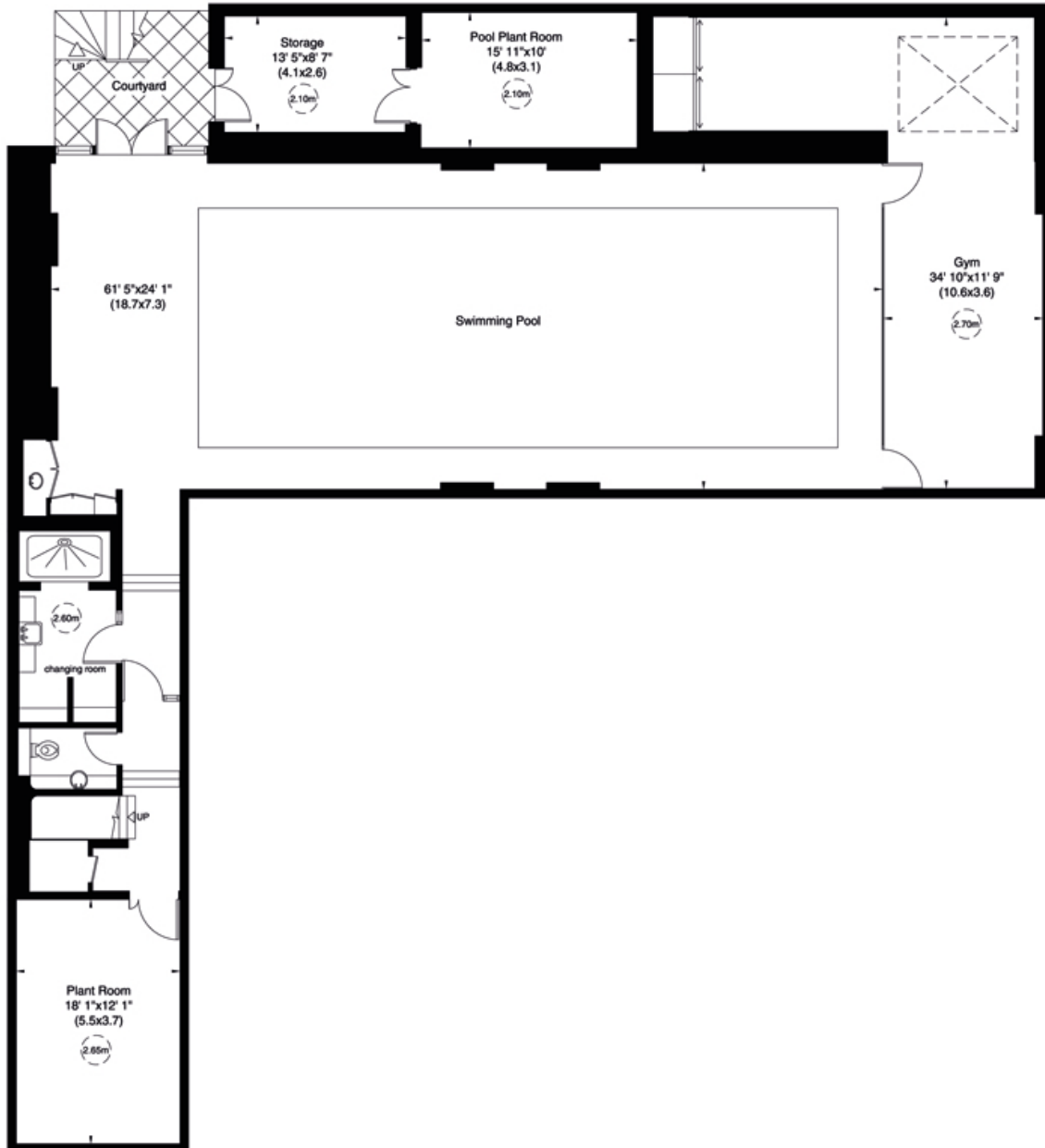
Winnington Road, N2

Gross internal area (approx.)

10180 Sq ft (946 Sq m) Including Outside Storage and Pool Plant Room

For identification only, Not to Scale

capital 020 8871 7722



Lower Ground Floor

Not to scale, for guidance only and must not be relied upon as a statement of fact. All measurements and areas are approximate only (and have been prepared in accordance with the current edition of the RICS Code of Measuring Practice).